



GMT MONTHLY MEMBERSHIP PROGRESS REPORT

Results as of: 11/30/2017

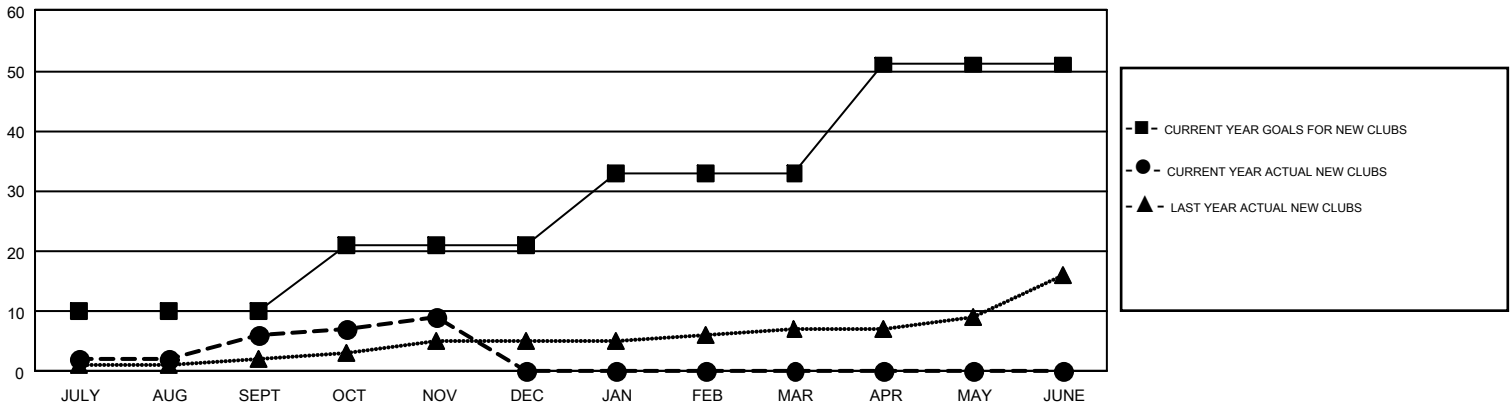
GMT Constitutional Area 1, Group B

GMT: CINDY GREGG

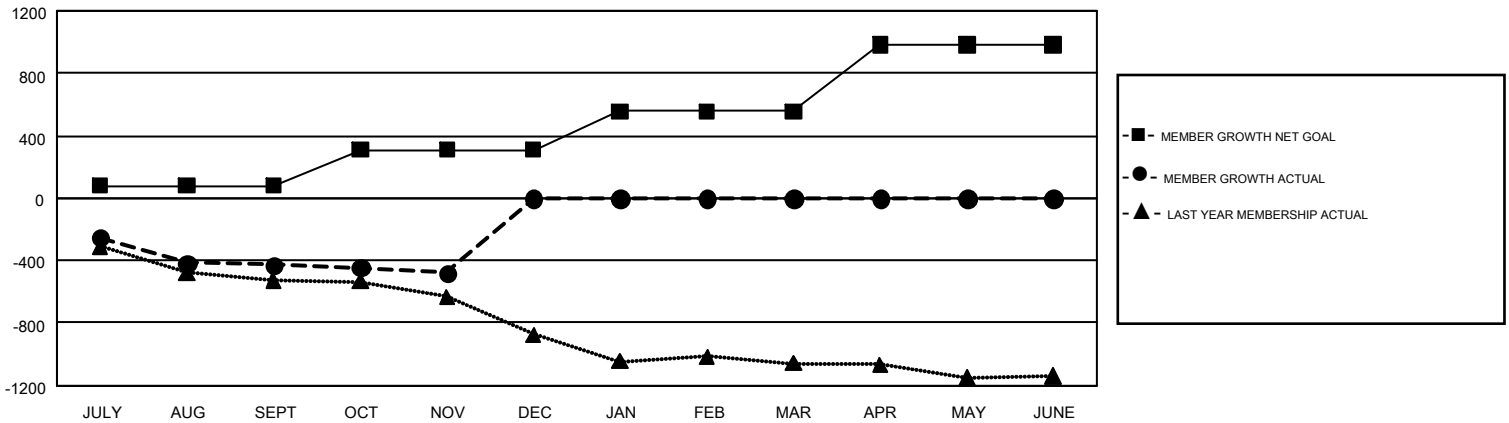
REPORT DOES NOT INCLUDE CLUBS IN UNDISTRICTED AREAS.

Clubs				Members			
RESULTS FOR 2017-2018				RESULTS FOR 2017-2018			
QUARTER	NEW CLUB GOAL	NEW CLUBS	DROPPED CLUBS	QUARTER	MEMBER GROWTH NET GOAL	MEMBER GROWTH ACTUAL	DROPPED MEMBERS ACTUAL (including transfers)
JULY/AUG/SEPT	10	6	5	JULY/AUG/SEPT	81	993	1,289
OCT/NOV/DEC	11	3	5	OCT/NOV/DEC	228	758	752
JAN/FEB/MAR	12	0	0	JAN/FEB/MAR	249	0	0
APR/MAY/JUNE	18	0	0	APR/MAY/JUNE	423	0	0

GOALS AND ACTUAL NEW CLUBS CUMULATIVE



GOALS AND ACTUAL MEMBERS CUMULATIVE



DROPPED CLUBS: 10	539 CLUBS OF 1,550 ADDED 1 OR MORE NEW MEMBERS	GENDER DISTRIBUTION MALE 30,195 (72.16%) FEMALE 11,651 (27.84%)
DROPPED MEMBERS DECEASED 307 CLUB CANCELLED 19 OTHER 1,715 TOTAL 2,041	CLICK HERE FOR CUMULATIVE MEMBERSHIP DATA	TOTAL FAMILY UNIT MEMBERS 7,960 FAMILY MEMBERS PAYING HALF DUES 4,078